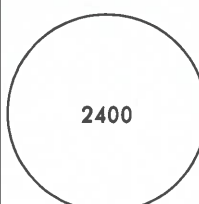
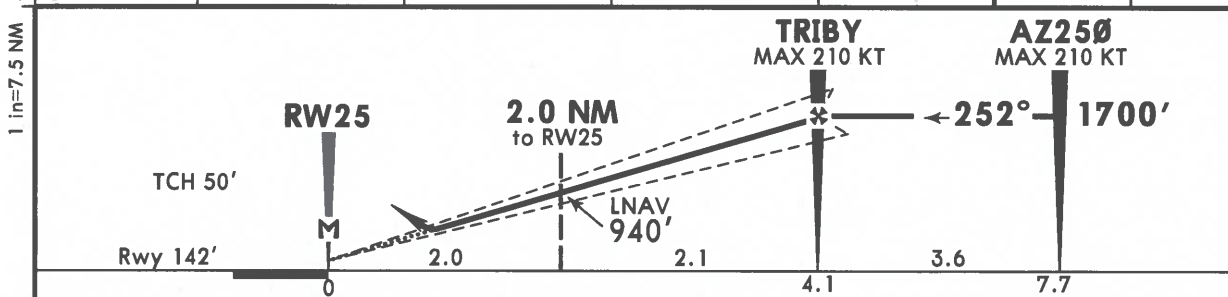
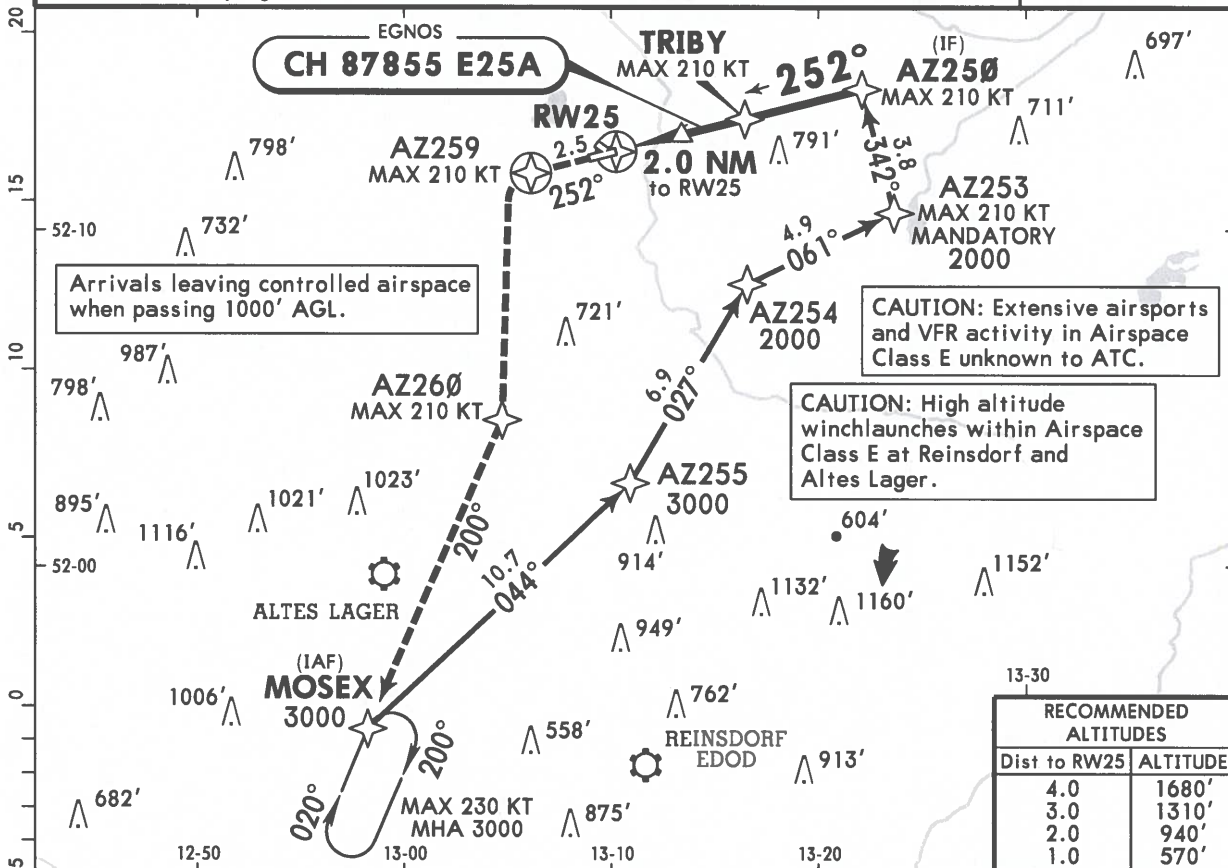



EDAZ
SCHOENHAGEN

ATIS 118.490		BREMEN Radar (APP) 120.630 119.505X		*SCHOENHAGEN Information 131.155		
BRIEFING STRIP™	EGNOS Ch 87855 E25A	Final Apch Crs 252°	TRIBY 1700' (1558')	LPV CAT I DA(H) 692' (550')	Apt Elev 152' Rwy 142'	
	MISSED APCH: Climb on track 252° to AZ259. Then turn LEFT direct to AZ260 climbing to MAX 2000'. Then turn RIGHT to MOSEX climbing to 3000'.					 2400 MSA ARP
	Alt Set: hPa (IN on req) Rwy Elev: 5 hPa Trans level: By ATC Trans alt: 5000' 1. CAUTION: Sloping sand hill on short final. 2. Baro-VNAV not authorized below -15°C.					



Gnd speed-Kts	70	90	100	120	140	160		AZ259 on 252°
Glide Path Angle 3.50°	434	557	619	743	867	991		

MAP at RW25 Standard						CIRCLE-TO-LAND Not authorized North of airport	
LPV CAT I DA(H) 692' (550')		STRAIGHT-IN LANDING RWY 25 LNAV/VNAV A: 576' (434') DA(H) B: 588' (446') C: 600' (458')		LNAV CDFA DA/MDA(H) 690' (548')		Max Kts	MDA(H) VIS
ALS out		ALS out		ALS out		100	690' (538') 1500m
RVR 1500m		RVR 1500m		RVR 1500m		135	710' (558') 1600m
PANS OPS D NOT APPLICABLE						D NOT APPLICABLE	

CHANGES: None.

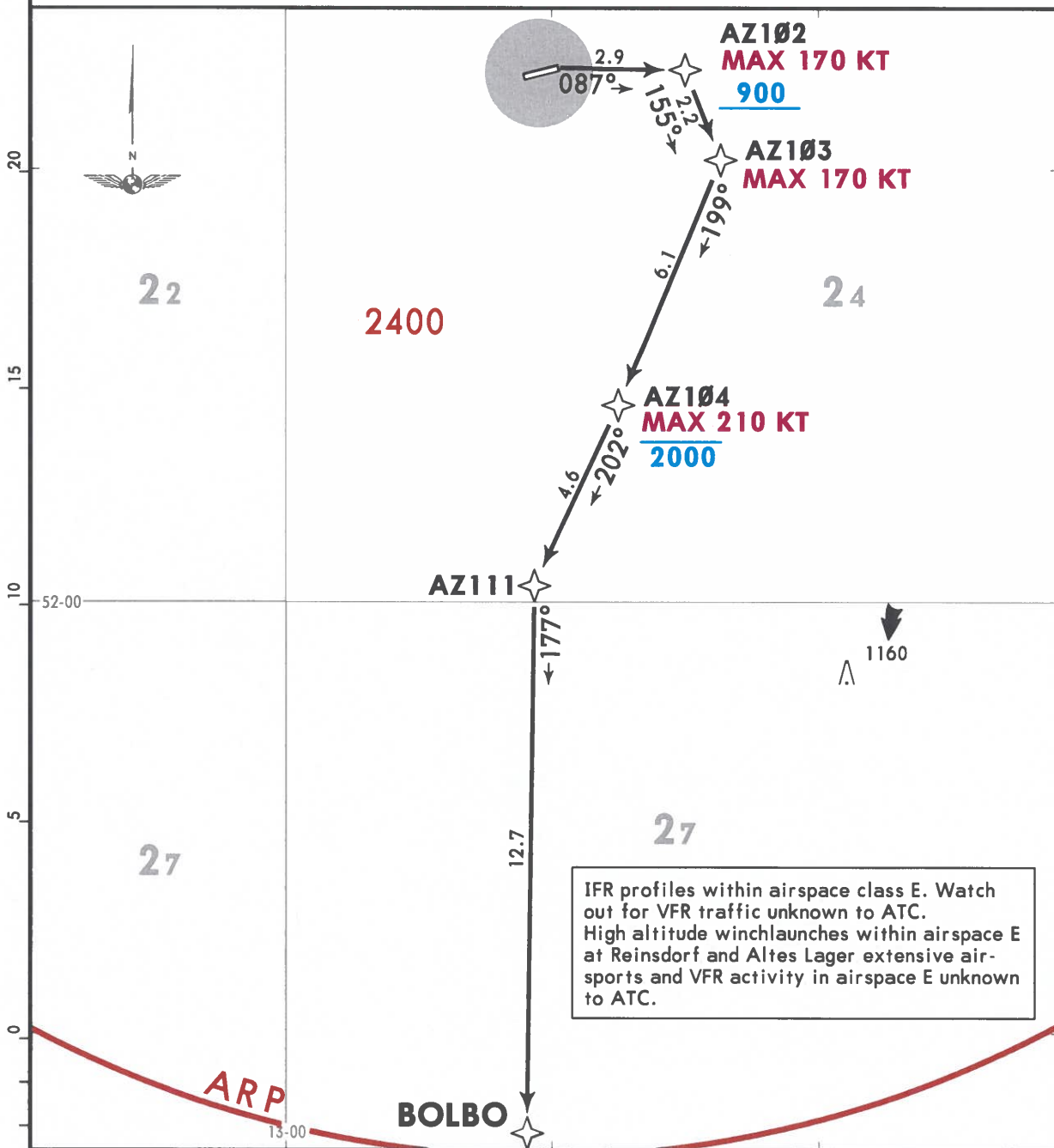
© JEPPESEN, 2018, 2022. ALL RIGHTS RESERVED.

- NOT FOR NAVIGATIONAL USE -

BREMEN Radar (APP) 119.505 120.630	Apt Elev 152	Trans alt: 5000 1. RNAV-1 or RNP-1 or A-RNP equivalent. 2. GPS required. 3. DME/DME, DME/DME/IRU not authorized. 4. Contact BREMEN Radar IMMEDIATELY after take-off. 5. EXPECT close-in obstacles. 6. SIDs are also noise abatement procedures. Strict adherence within the limits of aircraft performance is MANDATORY.
---	-----------------	--

BOLBO 1N [BOLB1N]
RWY 07 RNAV DEPARTURE

SPEED: MAX 250 KT BELOW FL100 OR AS BY ATC
NOT APPLICABLE WITHIN AIRSPACE C



IFR profiles within airspace class E. Watch out for VFR traffic unknown to ATC. High altitude winchlaunches within airspace E at Reinsdorf and Altes Lager extensive air-sports and VFR activity in airspace E unknown to ATC.

This SID requires a minimum climb gradient of 250 per NM (4.1%) until passing 900 due to procedure requirement.

Gnd speed-KT	75	100	150	200	250	300
250 per NM	313	417	625	833	1042	1250

Initial climb clearance 2000

ROUTING

Climb on 087° track to AZ102, turn RIGHT to AZ103, turn RIGHT to AZ104, then to AZ111, turn LEFT to BOLBO.

- NOT FOR NAVIGATIONAL USE -

1 in=5 NM

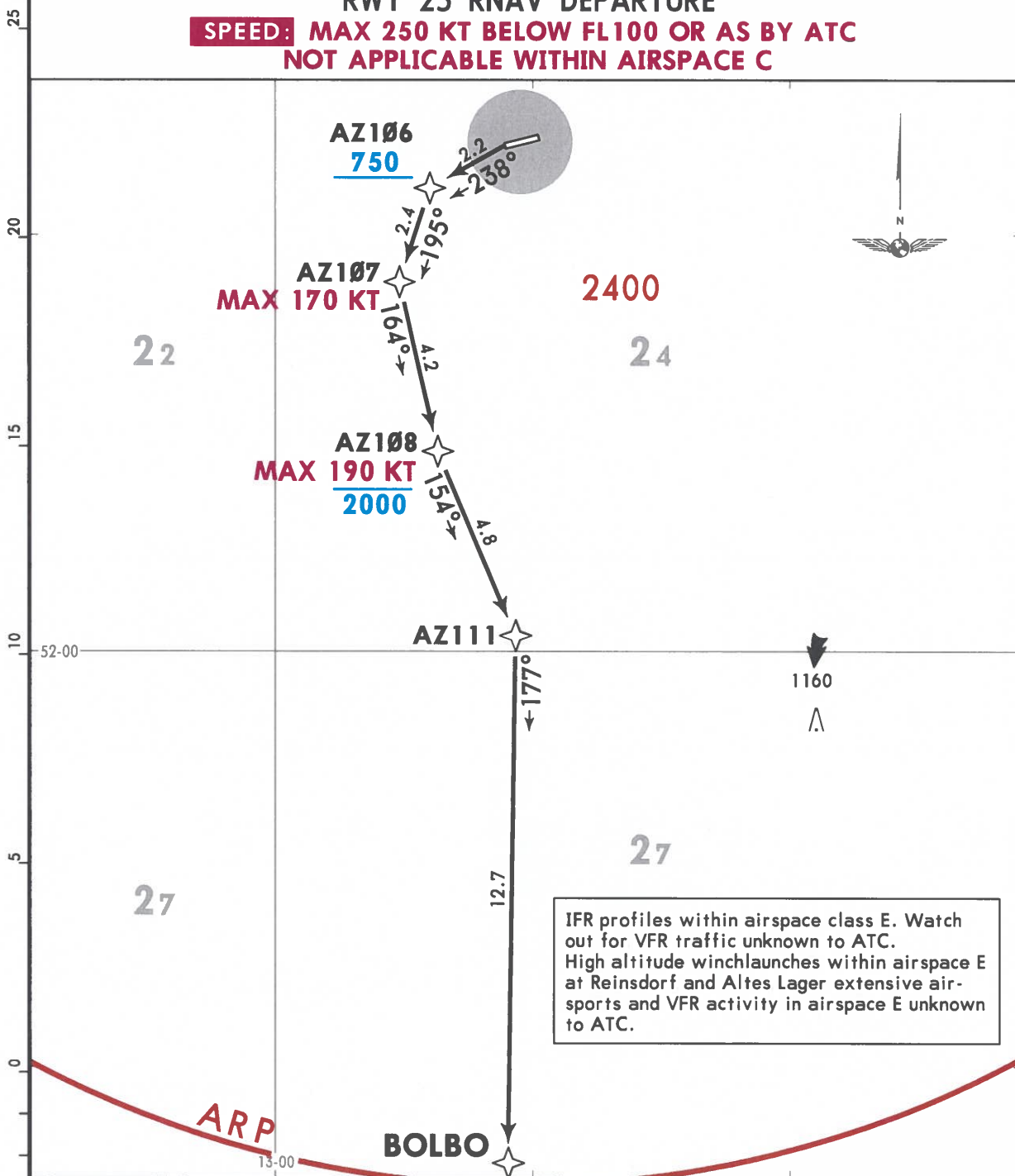
BREMEN
Radar (APP)
119.505
120.630

Apt Elev
152

- Trans alt: 5000
1. RNAV-1 or RNP-1 or A-RNP equivalent.
 2. GPS required.
 3. DME/DME, DME/DME/IRU not authorized.
 4. Contact BREMEN Radar IMMEDIATELY after take-off.
 5. EXPECT close-in obstacles.
 6. SIDs are also noise abatement procedures. Strict adherence within the limits of aircraft performance is MANDATORY.

BOLBO 1A [BOLB1A]
RWY 25 RNAV DEPARTURE

SPEED: MAX 250 KT BELOW FL100 OR AS BY ATC
NOT APPLICABLE WITHIN AIRSPACE C



- NOT FOR NAVIGATIONAL USE -

This SID requires a minimum climb gradient of 280 per NM (4.6%) until passing AZ106 due to procedure requirement.

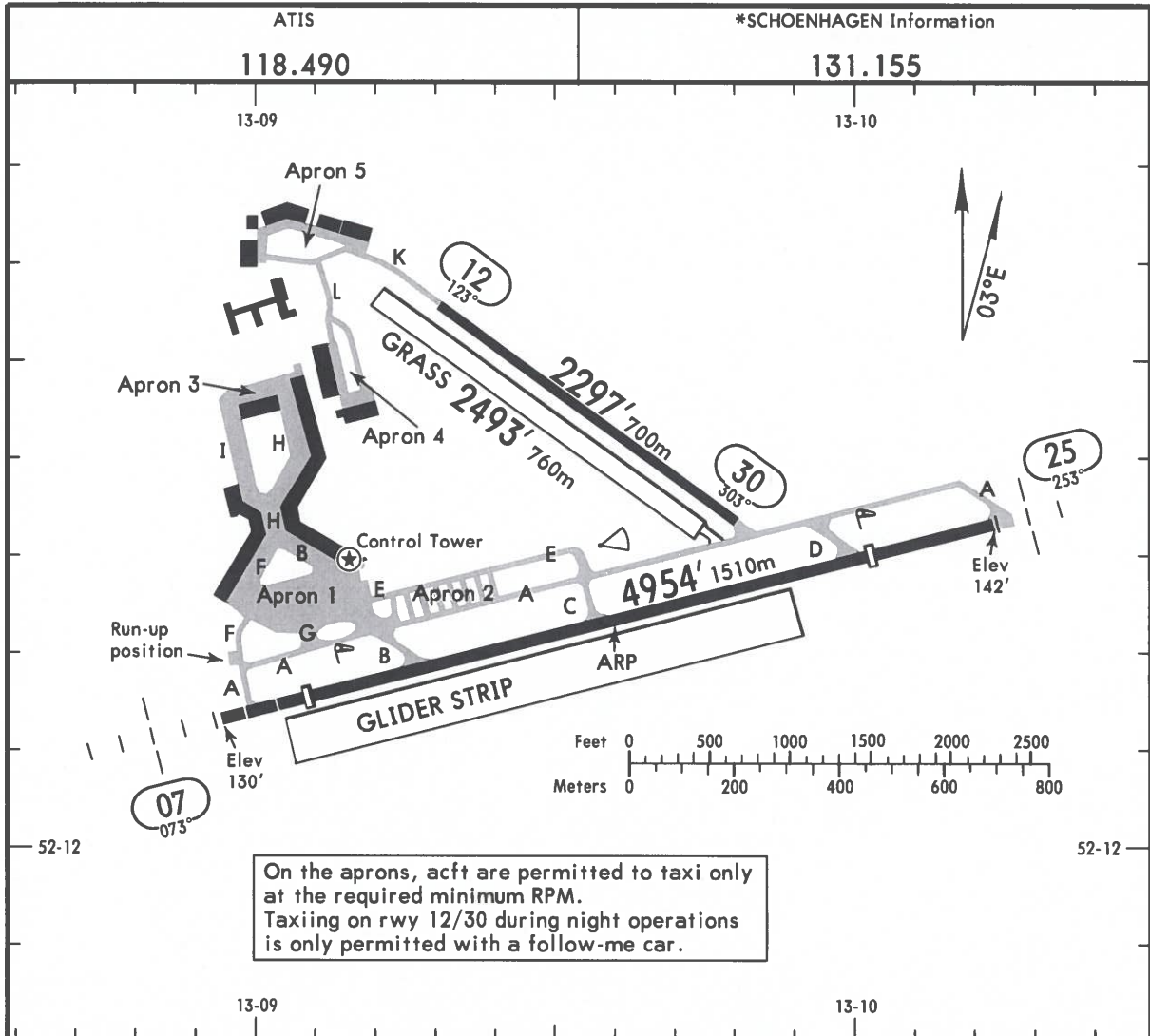
Gnd speed-KT	75	100	150	200	250	300
280 per NM	350	467	700	933	1167	1400

Initial climb clearance **2000**

ROUTING

Climb on 238° track to AZ106, turn LEFT to AZ107, turn LEFT to AZ108, turn LEFT to AZ111, turn RIGHT to BOLBO.

1 in=5 NM



On the aprons, acft are permitted to taxi only at the required minimum RPM.
 Taxiing on rwy 12/30 during night operations is only permitted with a follow-me car.

RWY	ADDITIONAL RUNWAY INFORMATION				USABLE LENGTHS			WIDTH
	HIRL	HIALS	REIL	PAPI-L (angle 3.5°)	Threshold	Landing Beyond Glide Slope	TAKE-OFF	
07 25					4396' 1340m		4167' 1270m	75' 23m
12 30					4167' 1270m		4396' 1340m ①	59' 18m
12 30	Grass runway							131' 40m

① Increased by 131'/40m safety strip.

Standard		TAKE-OFF	
	Day: RL or RCLM Night: RL		Adequate vis ref (Day only)
A			
B	400m		500m
C			
D	NOT APPLICABLE		

- NOT FOR NAVIGATIONAL USE -