

EDAZ
SCHOENHAGEN



SCHOENHAGEN
GERMANY

09 DEC 22 (19-1)

BRIEFING STRIP™

LOCATION Elev 152' /46m N52 12.2 E013 09.6	FIS LANGEN INFORMATION 132.650 ⁽¹⁾	ATIS ATIS 118.490 ⁽²⁾
--------------------------------------------------	--------------------------------------------------	-------------------------------------

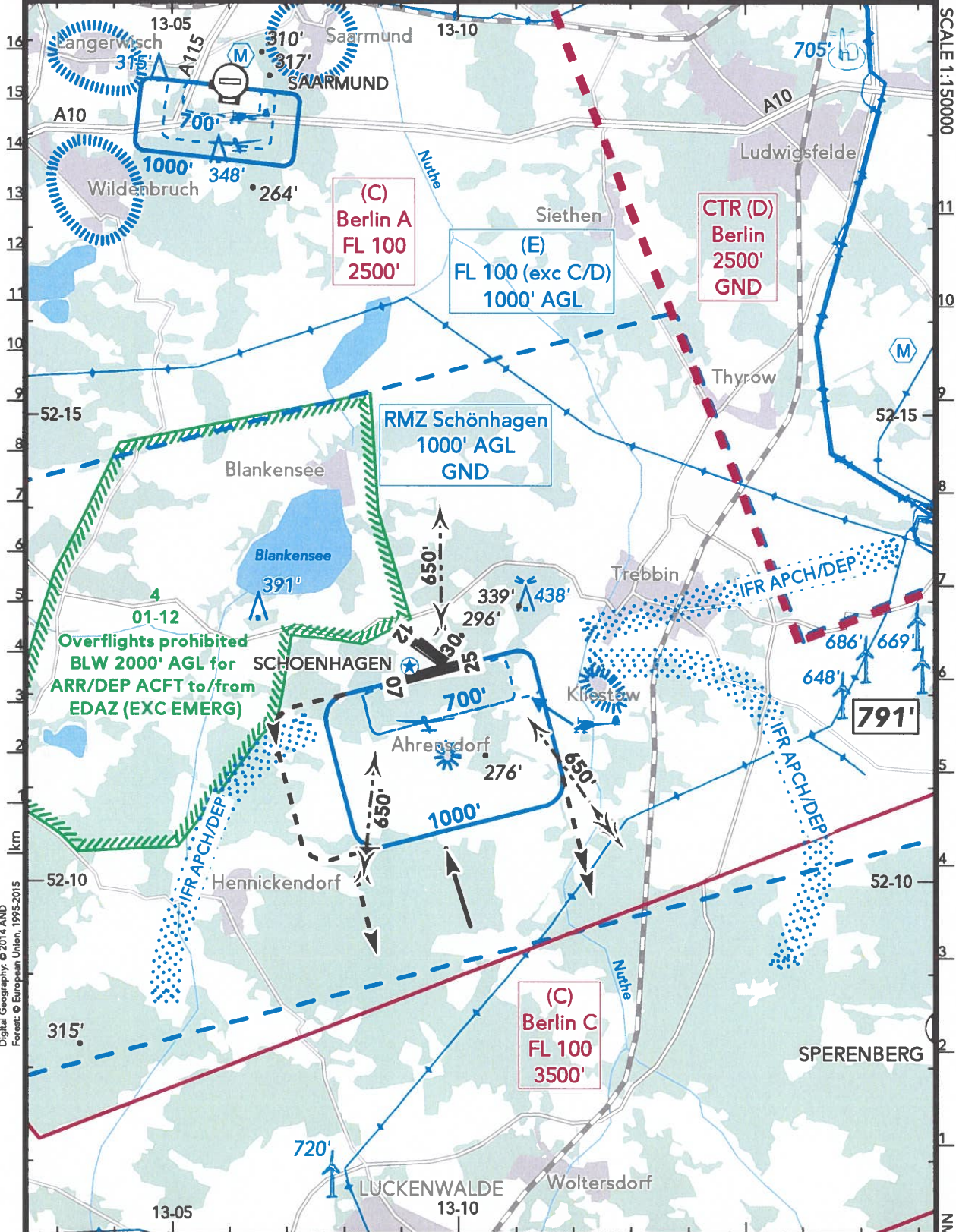
AFIS SCHOENHAGEN INFORMATION 131.155 ⁽³⁾ (ge, en)		
-----------------------------------------------------------------	--	--

(¹) also Berlin (C) Airspace (²) 60 NM / FL 200 (³) 25 NM / 4000' AGL

VAR 3+E

SCALE 1:150000

- NOT FOR NAVIGATIONAL USE -



Digital Geography: © 2014 AND
Forest: © European Union, 1995-2015

CHANGES: COM - VAR - Airspace - OBST - Spot ELEV.

© JEPPESEN, 2017, 2022. ALL RIGHTS RESERVED

EDAZ

JEPPESEN

SCHOENHAGEN

SCHOENHAGEN

09 DEC 22 (19-2)

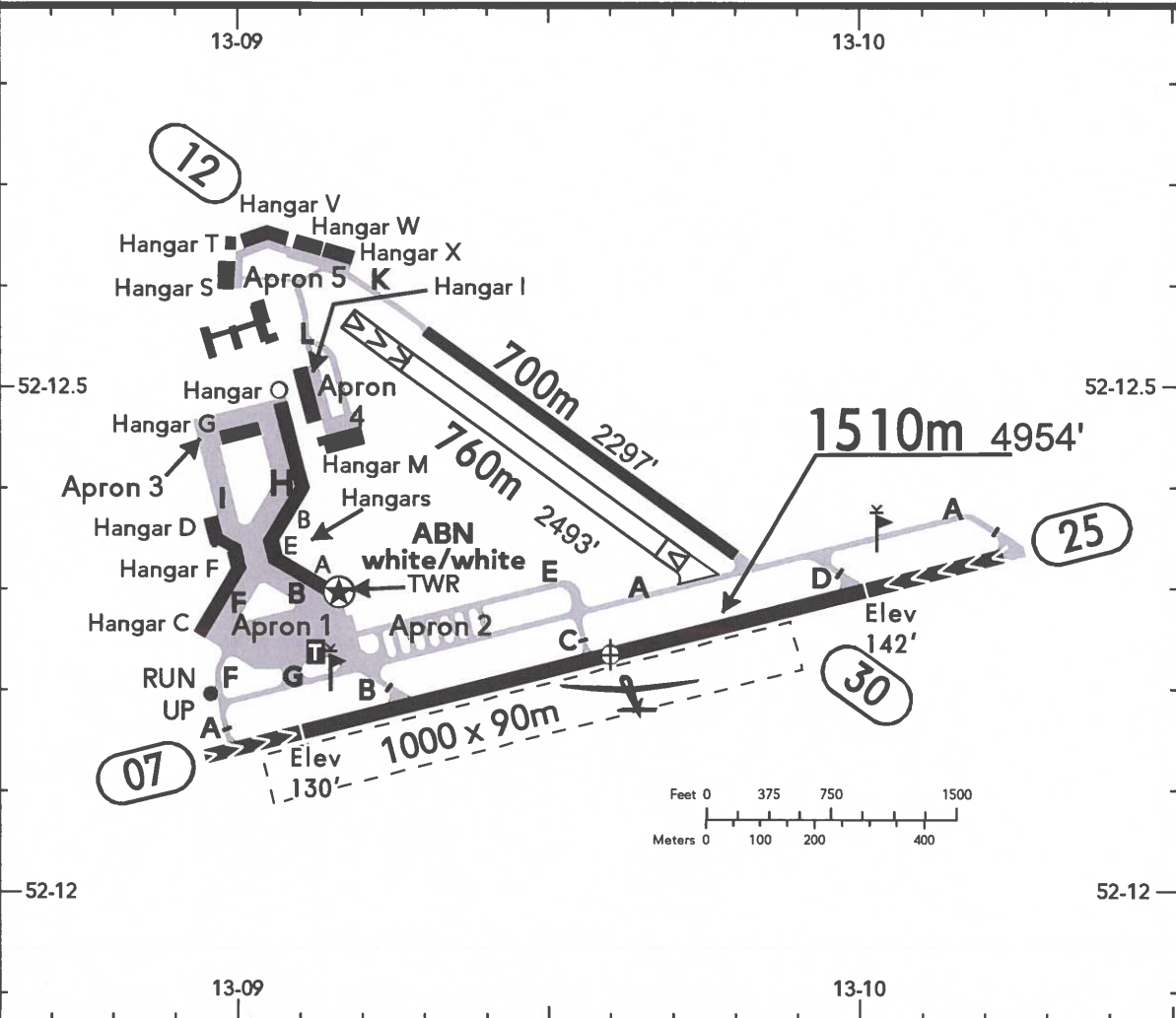
GERMANY

BRIEFING STRIP™

LOCATION Elev 152' /46m N52 12.2 E013 09.6	ATIS ATIS 118.490 ⁽¹⁾	AFIS SCHOENHAGEN INFORMATION 131.155 ⁽²⁾ (ge, en)
--------------------------------------------------	-------------------------------------	-----------------------------------------------------------------



⁽¹⁾ 60 NM / FL 200 ⁽²⁾ 25 NM / 4000' AGL



SCALE 1:18000

- NOT FOR NAVIGATIONAL USE -

ABN - RWY 07/25: ALS - PAPI 07 (3.5°), 25 (3.5°) - THRL - RL - RENL - TWYL - APRON - WDI.

RWY No	Dimension (m) - Surface	TORA (m)	LDA (m)	Strength	Lights
07 (072°)	1510 x 23 Asphalt	1270	1340	PCN 25/F/A/X/T	
25 (252°) ①		1340	1270		
12 (116°)	760 x 40 Grass	710	625	2t MTOM	---
30 (296°)		625	710		
12 (116°)	700 x 18 Asphalt	700	700	PCN 25/F/A/X/T	---
30 (296°)					

① The paved safety strip (40m) may be used additionally for TKOF if necessary.

<p>Contact SCHOENHAGEN INFORMATION at least 5 MIN prior to reaching the AD.</p> <p>Within AD traffic listening watch shall be maintained.</p> <p>Straight-in direct APCH & DEP are generally prohibited.</p> <p>Fast ACFT may use the offset base for visual APCH 07.</p> <p>Visual approach traffic circuit 07/25 only via downwind.</p> <p>Approach via right base 25 only on instruction from</p>	<p>SCHOENHAGEN INFORMATION.</p> <p>DEPs from RWY 07/25 only with crosswind. No heading change below 1500' as far as possible in VMC.</p> <p>Approaching ULM use pattern for motor ACFT in 1000'. Small ULM-pattern in 700' only for pattern TFC.</p> <p>TKOF into direction RWY 12, LDG in direction RWY 12/30 on instruction from SCHOENHAGEN INFORMATION only.</p> <p>TKOF into direction RWY 30 are prohibited for all ACFT.</p>
----------------------------------------------------------------------------------------------------------------------------------------------------------------------------------------------------------------------------------------------------------------------------------------------------------------------------------------------------------------------------------------------------------	-------------------------------------------------------------------------------------------------------------------------------------------------------------------------------------------------------------------------------------------------------------------------------------------------------------------------------------------------------------------------------------------------------------------------------------

Powered ACFT are not permitted to take off or land if the yellow flashing warning light on the glider winch is turned on.

Pay attention to GLD and PJE.

During GLD operations ULM will fly the traffic circuit for powered ACFT. Listen for traffic information from the Flugleitung.

Overflying of bird reservation areas W and NW below 2000' AGL is generally prohibited for approaching and departing ACFT, overflights of surrounding residential areas shall be avoided as far as possible. Exception for emergencies.

CAUTION: VFR APCH & DEP should avoid the IFR APCH & DEP sectors

Sloping sand hill on short final RWY 25. PSN 500m-800m before THR 25 on EXTD RCL.

- NOT FOR NAVIGATIONAL USE -